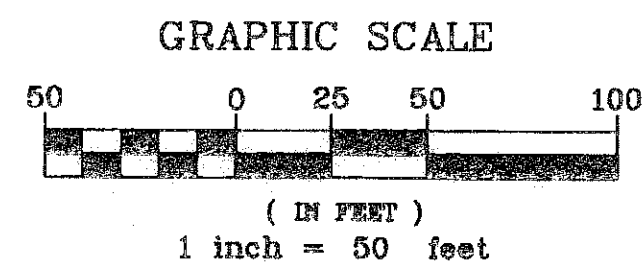
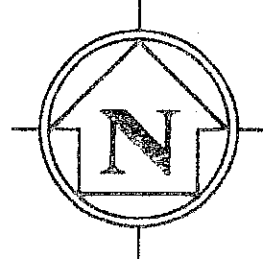


# WELLINGTON GREEN, A MUPD/PUD, RE-PLAT NO. 2

BEING A REPLAT OF A PORTION OF WELLINGTON GREEN, A MUPD/PUD, A REPLAT OF A PORTION OF PARCEL 1 (PLAT BOOK 112, PAGES 126 THROUGH 129 INCLUSIVE, PUBLIC RECORDS OF PALM BEACH COUNTY, FLORIDA) LYING IN SECTION 13, TOWNSHIP 44 SOUTH, RANGE 41 EAST, VILLAGE OF WELLINGTON, PALM BEACH COUNTY, FLORIDA.

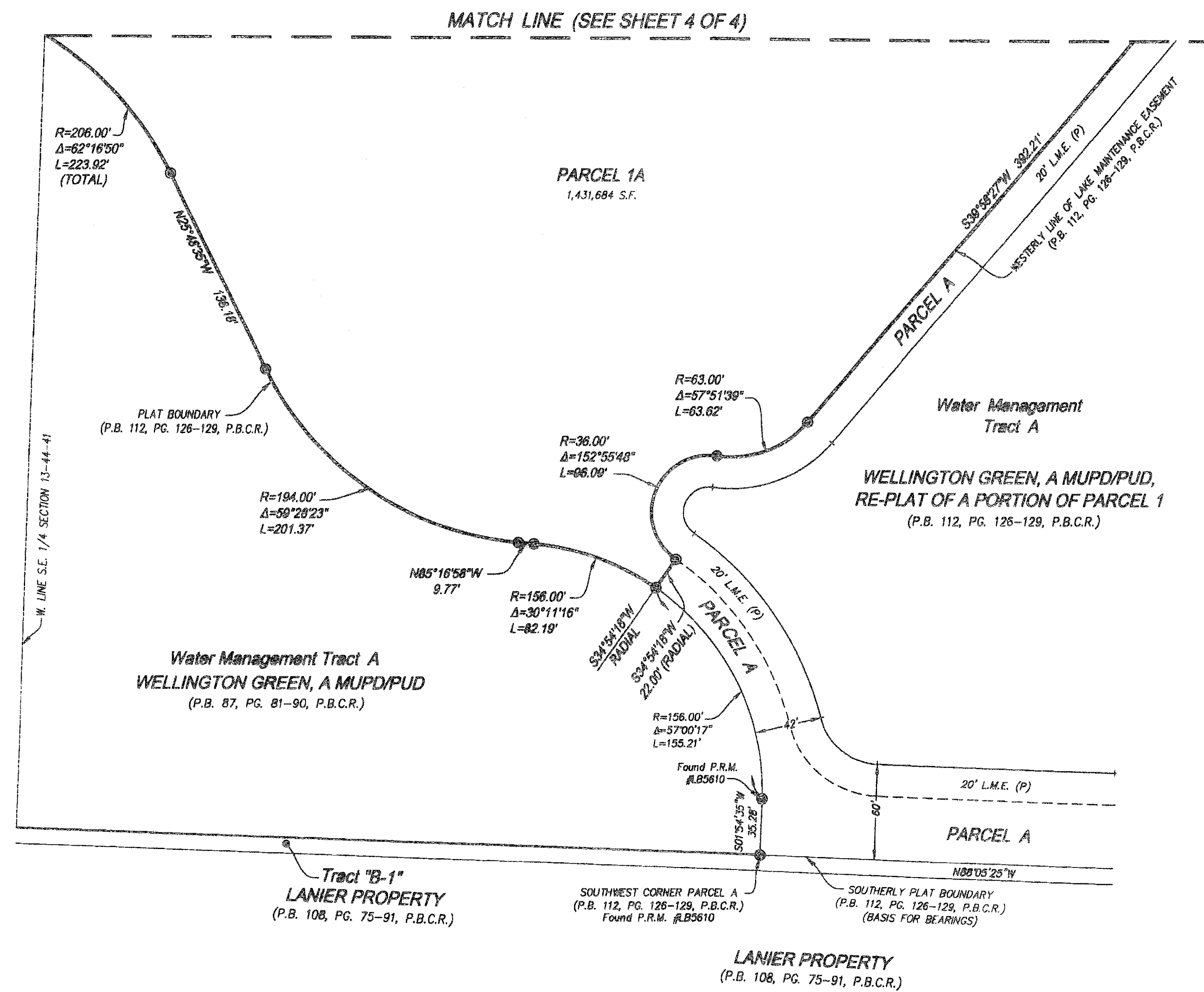
DATE: APRIL, 2009

174



**SHEET INDEX:**

- SHEET 1 - COVER SHEET
- SHEET 2 - MAP SHEET AND SURVEY NOTES
- SHEET 3 - MAP SHEET
- SHEET 4 - MAP SHEET

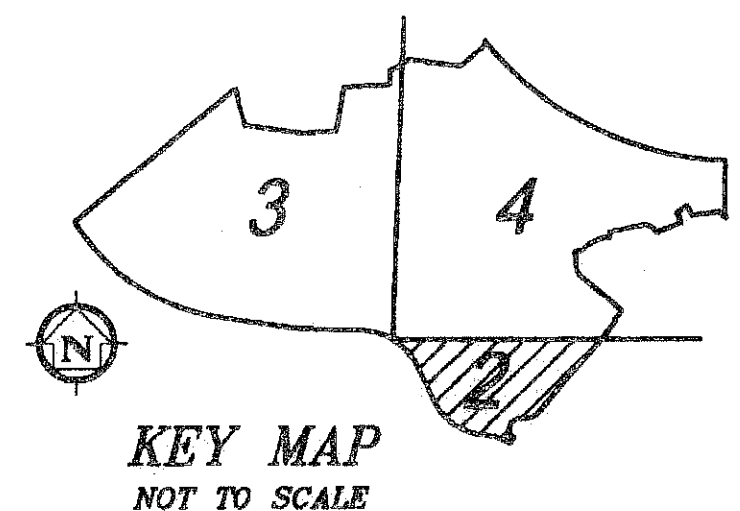


**SURVEYOR'S NOTES:**

1. BUILDING SETBACK LINES SHALL BE AS REQUIRED BY THE VILLAGE OF WELLINGTON LAND DEVELOPMENT CODE AND ORDINANCES OF THE VILLAGE OF WELLINGTON.
2. NO BUILDINGS, STRUCTURES, IMPROVEMENTS, TREES, WALLS OR FENCES SHALL BE INSTALLED WITHIN AN EASEMENT WITHOUT THE PRIOR WRITTEN CONSENT OF ALL EASEMENT BENEFICIARIES AND ALL APPLICABLE VILLAGE OF WELLINGTON APPROVALS OR PERMITS AS REQUIRED FOR SUCH ENCROACHMENTS.
3. IN THOSE CASES WHERE EASEMENTS OF DIFFERENT TYPES CROSS OR OTHERWISE COINCIDE, DRAINAGE EASEMENTS SHALL HAVE FIRST PRIORITY, UTILITY EASEMENTS SHALL HAVE SECOND PRIORITY, ACCESS EASEMENTS SHALL HAVE THIRD PRIORITY, AND ALL OTHER EASEMENTS SHALL BE SUBORDINATE TO THESE EASEMENTS WITH THEIR PRIORITIES BEING DETERMINED BY USE RIGHTS GRANTED.
4. BEARINGS SHOWN HEREON ARE RELATIVE TO A RECORD BEARING OF N88°05'25\"/>

**LEGEND**

- ⊕ = CENTERLINE
- Δ = DELTA (CENTRAL ANGLE)
- FPL = FLORIDA POWER AND LIGHT
- LB = LICENSED SURVEYING BUSINESS
- L = LENGTH OF ARC
- L.B.E. = LANDSCAPE BUFFER EASEMENT
- L.M.E. = LAKE MAINTENANCE EASEMENT
- L.M.A.E. = LAKE MAINTENANCE ACCESS EASEMENT
- O.R.B. = OFFICIAL RECORDS BOOK
- (P) = PER PLAT RECORDED IN PLAT BOOK 112, PAGES 126-129 (PALM BEACH COUNTY RECORDS)
- P.B. = PLAT BOOK
- P.B.C.R. = PALM BEACH COUNTY RECORDS
- PG. = PAGE
- ⊙ = PERMANENT REFERENCE MONUMENT (P.R.M.) NAIL & 1-1/2\"/>



This Instrument Prepared By:  
**James A. Hamilton, III**  
**IBI** 2200 PARK CENTRAL BLVD. NORTH  
SUITE 100  
POMPANO BEACH, FLORIDA 33064  
(954) 974-2200  
**IBI GROUP, INC.**  
ENGINEERS SURVEYORS PLANNERS  
AUTHORIZATION #LB5610